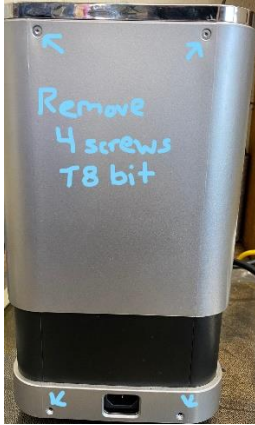


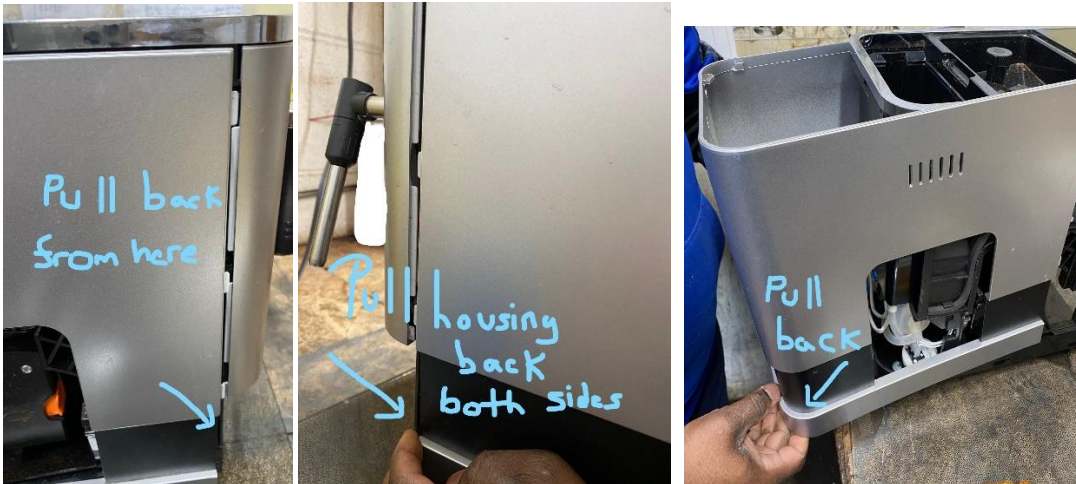
## ESPRESSIONE CONCIERGE LEAK ISSUE

([www.electra-craft.com](http://www.electra-craft.com))

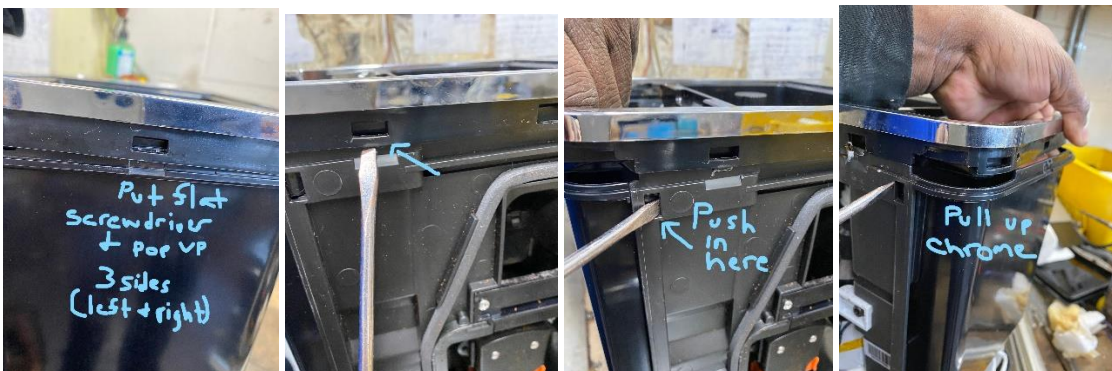
- 1) Remove the 4 screws at the back of the unit. You will need a T8 security torx bit for this.



- 2) After those screws are removed, you will have to pull the 3-sided housing back away from the unit as it is snapped to the front. Then pull the housing from the back away from the unit.



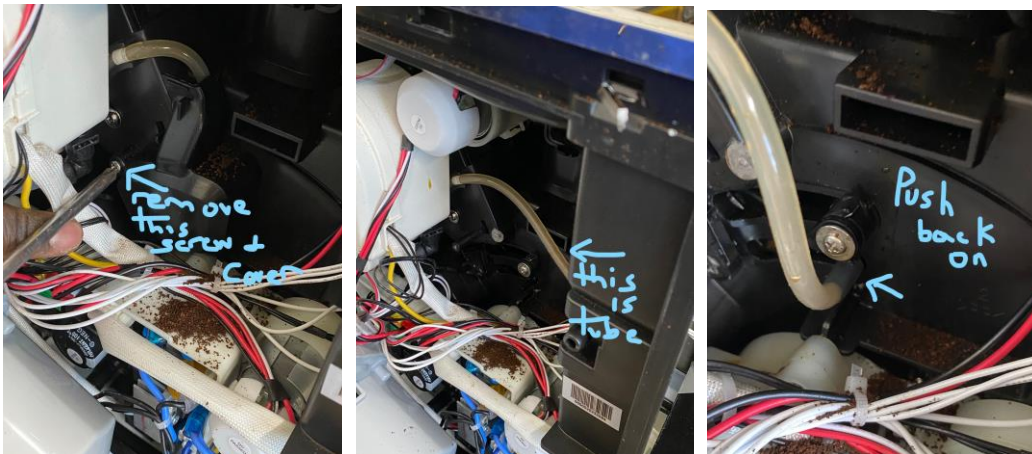
- 3) Then you will have to unlatch the 3 sides with a flat screwdriver. Follow below steps and then lift the top chrome housing.



- 4) Then you will pull back the water tank support and then push in the white tab for the grinder from the back to loosen. Then pull the grinder out from the side.



- 5) You will remove this screw and pull the cover away that holds the tube. You will find the clip loose in the cover. You want to either reuse this or a cord tie strap. You will see the tube loose there. You will need to push back on and tighten with the clamp or tie strap.



- 6) Then reassemble in reverse and all should work good.

[www.electra-craft.com](http://www.electra-craft.com)